



**ENOLA**

---

**Model Validation and Metrics in  
MagicDraw**

**October 2024**

# About US

---

LEAVE THE PAST IN THE PAST

IT'S TIME TO EVOLVE, DIGITALLY

WE ARE A TRAINING, COACHING, AND CONSULTING FIRM DEDICATED TO THE RAPID EVOLUTION OF OUR CLIENTS WITHIN THE DIGITAL UNIVERSE. OUR SERVICES ARE DIRECTED TOWARDS:

- DIGITAL ENGINEERING/TRANSFORMATION
- MODEL BASED SYSTEMS ENGINEERING
- ENTERPRISE ARCHITECTURE
- SOFTWARE ARCHITECTURE
- DATABASE ARCHITECTURE
- ONTOLOGIES
- COLLABORATION SERVER MANAGEMENT

---

## MISSION

Enola WILL train, coach, and mentor your staff to be independently successful as quickly as possible.

*Yes, our mission is to work ourselves out of a job!*

---

# COURSE DESCRIPTION

---

Model Validation and Metrics in MagicDraw is an advanced one-day course designed to teach the core concepts and features of validation rules, validation suites, and model metrics.

This course provides a mix of module-based lectures and live, hands-on, instructor led demonstration. Our trainers are all experienced practitioners who understand the balance of theory and practicality.

---

## Prerequisites:

Applying SysML with MagicDraw

## Required Software:

No Magic's MagicDraw (version 19.0+) with the SysML plugin or equivalent No Magic or Dassault Systèmes CATIA Magic products.

## Take-Aways:

- Foundational understand of capabilities and best practices for model validation and model metrics

---

# AGENDA

- Course Introduction
  - Introduction to Model Validation
  - Creating Custom Validation Suites
  - Introduction to Model Metrics
  - Predefined Metric Suites
  - Developing Custom Metric Suites
-

# COURSE CONTENT

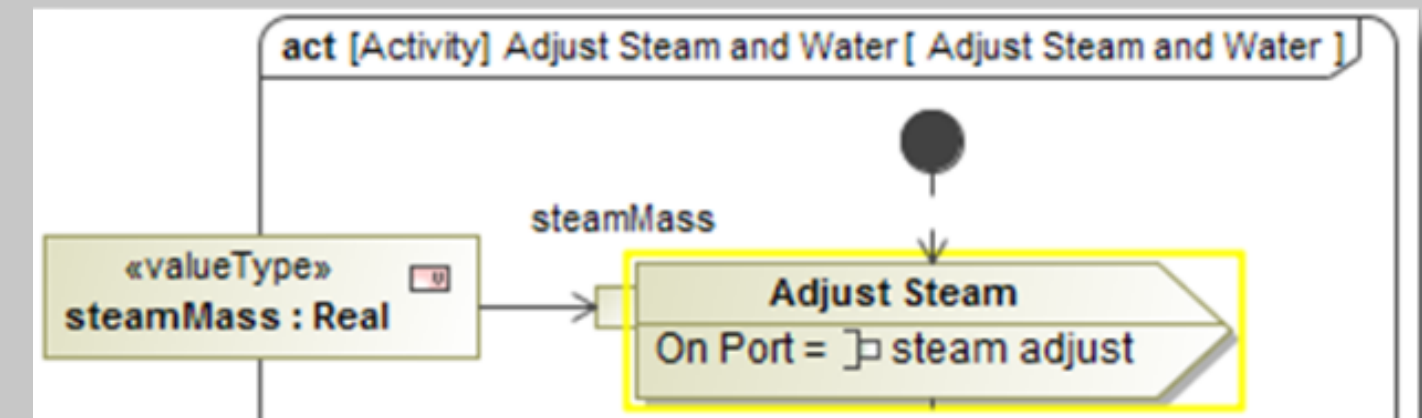
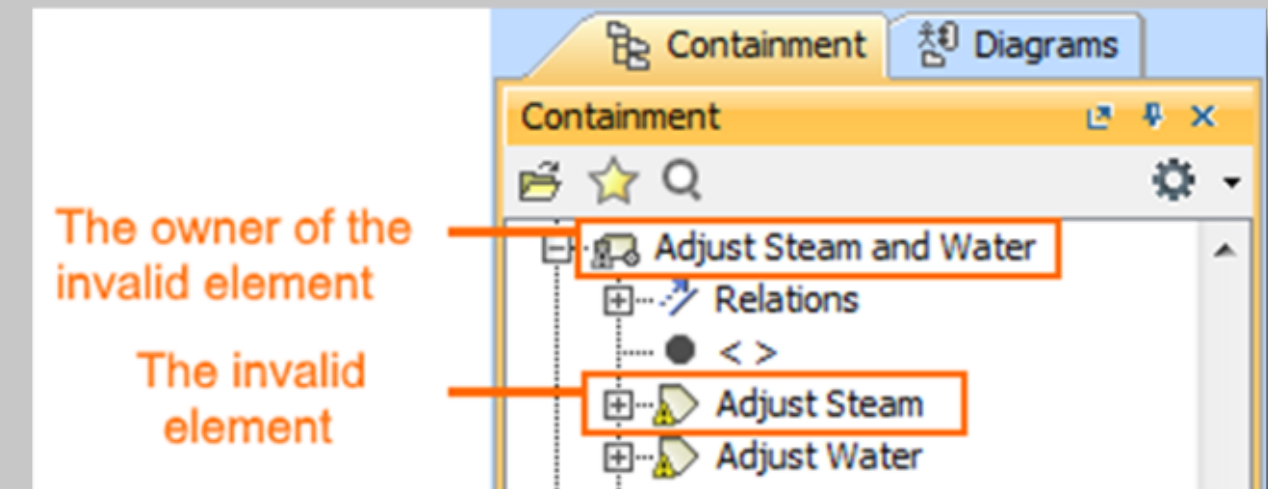


# Introduction to Model VALIDATION

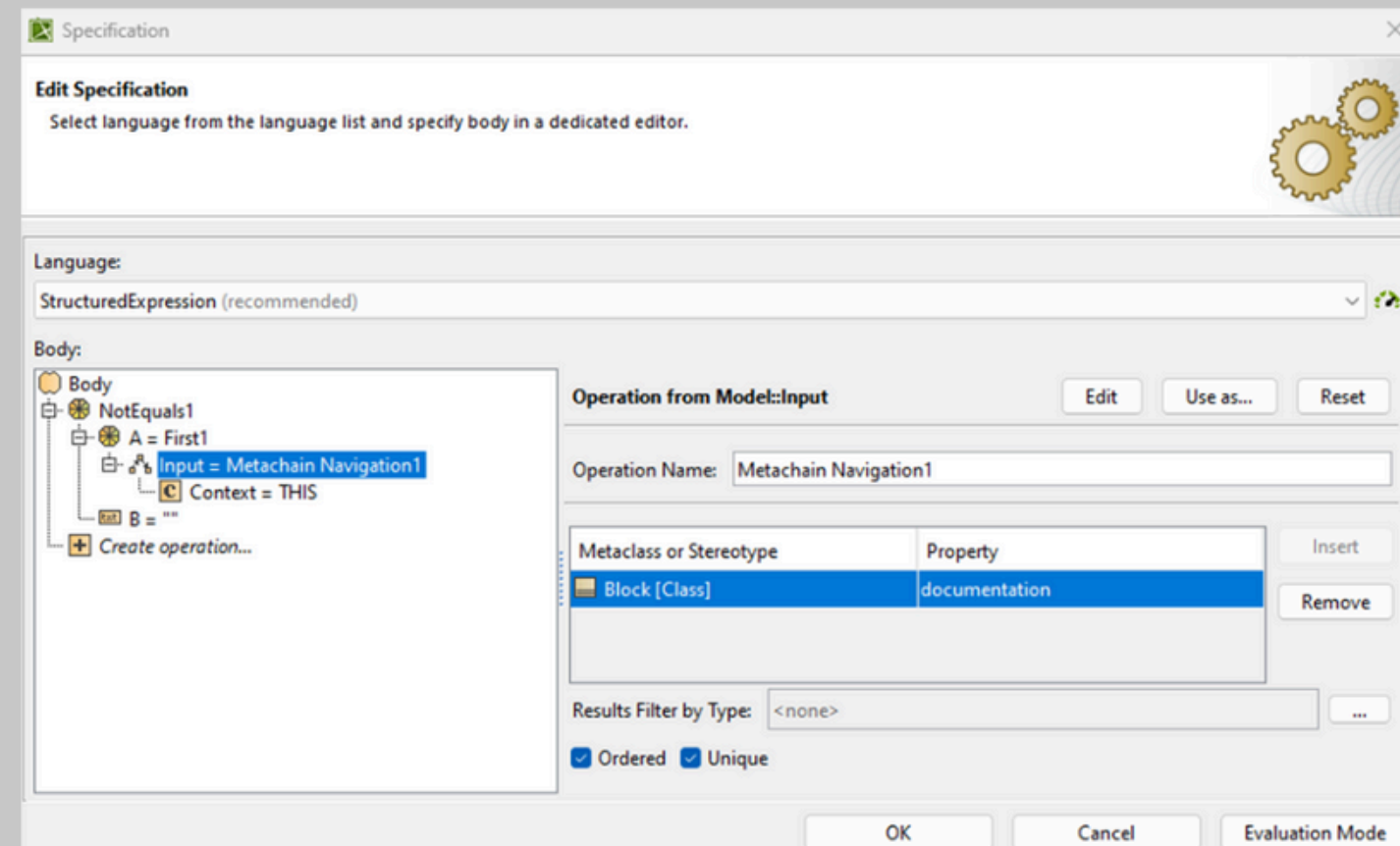
Models are validated against a set of Validation Rules, which check the accuracy, completeness, and correctness of a model.

This module covers:

- Validation Suites
- Validation Rules
- Predefined Validation Suites
- SAIC DE Profile
- Running Validation



# Creating Custom VALIDATION SUITES



Validation Suites are a collection of Validation Rules grouped together for a specific purpose, such as requiring adherence to a standard.

This module covers:

- Operations (Definition & Usage)
  - Simple Navigation
  - Metachain Navigation
- Metachain Helper Functions

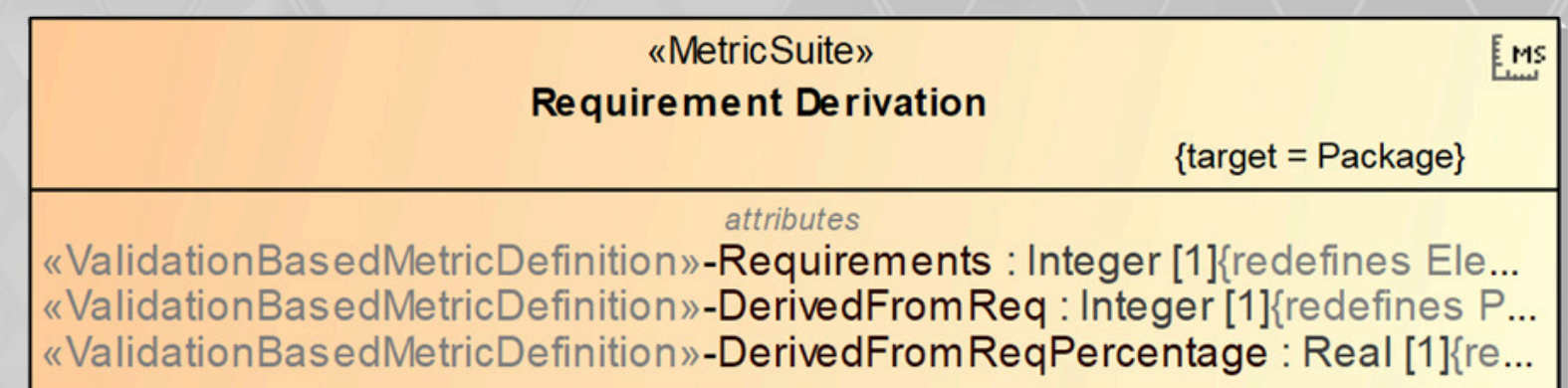
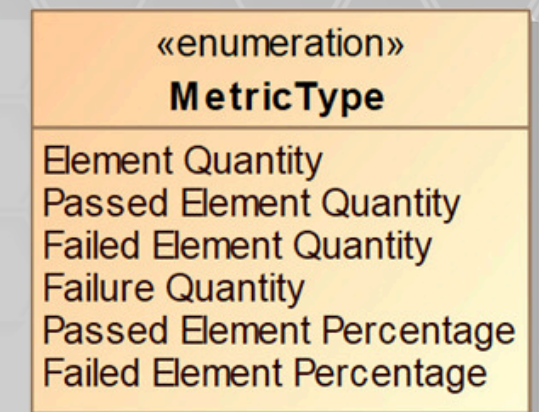
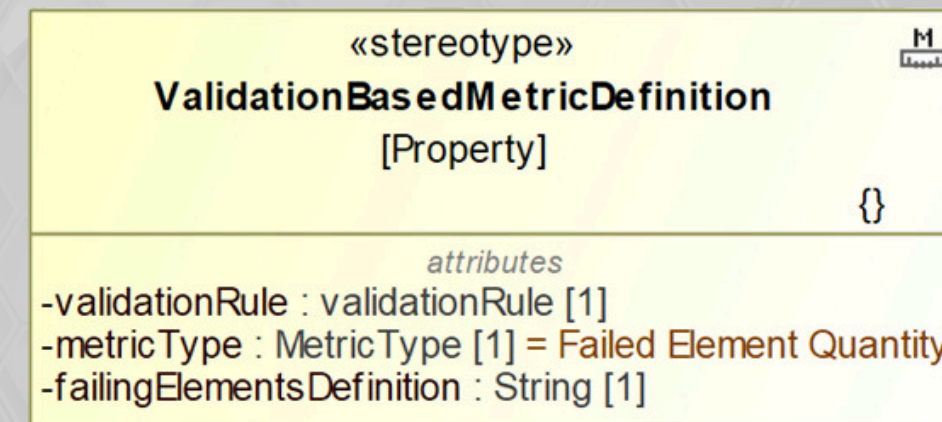


# Introduction to Model Metrics

A metric is an item of information about a specific aspect of a model, and a collection of metrics can be used to evaluate the current state of the model

This module covers:

- Metric Suites, Definition, & Tables
- Parameter Definition
- Validation-Based Metric Definition
- Best Practices

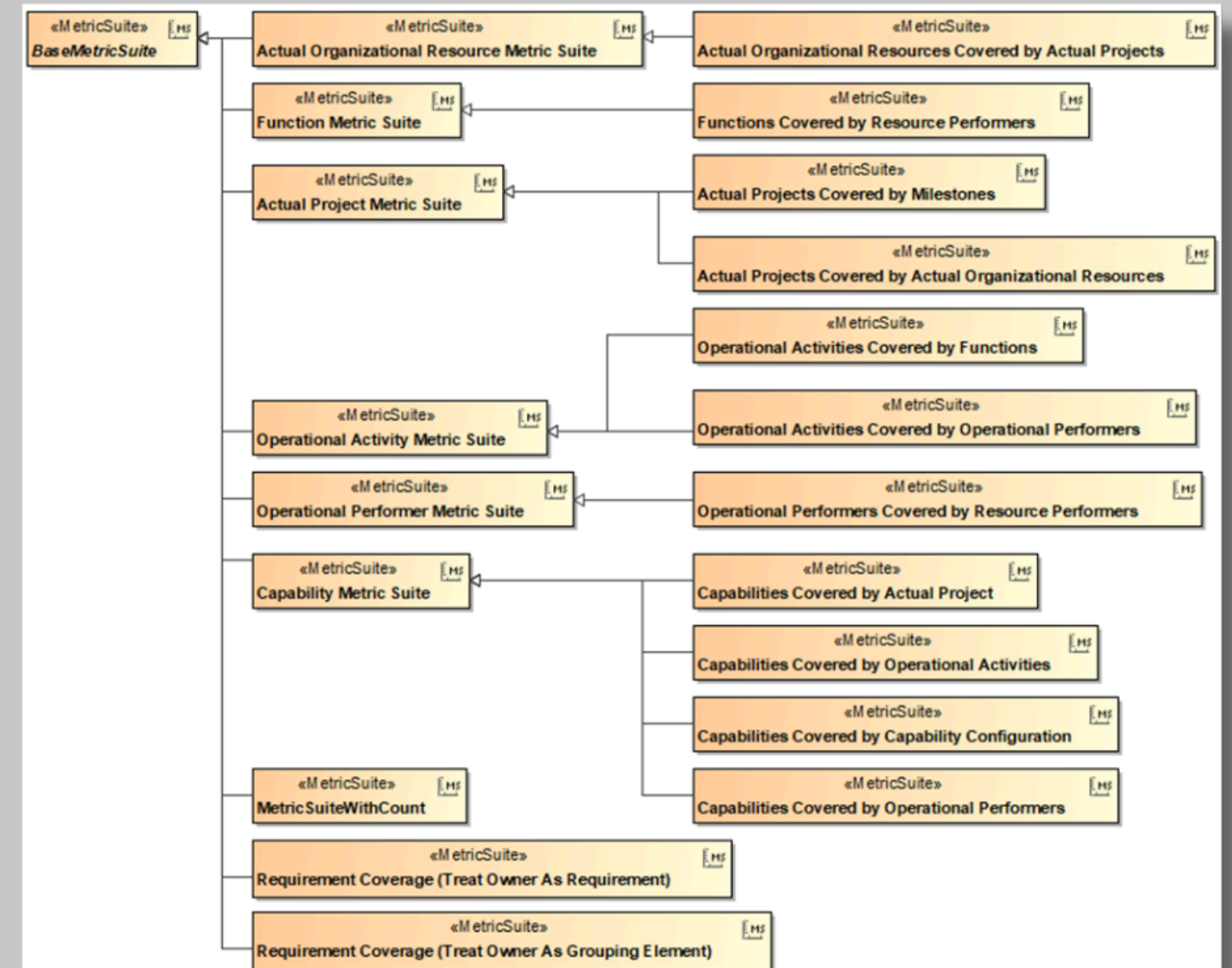


# Predefined Metric Suites

Certain MagicDraw Plugins provide basic but useful Metric Suites for specific languages and frameworks that are great tools for learning and experimenting with Model Metrics.

This Module Covers:

- Predefined SysML Metric Suites
- Treat Owner as Grouping
- Treat Owner as Requirement
- Creating Metric Tables

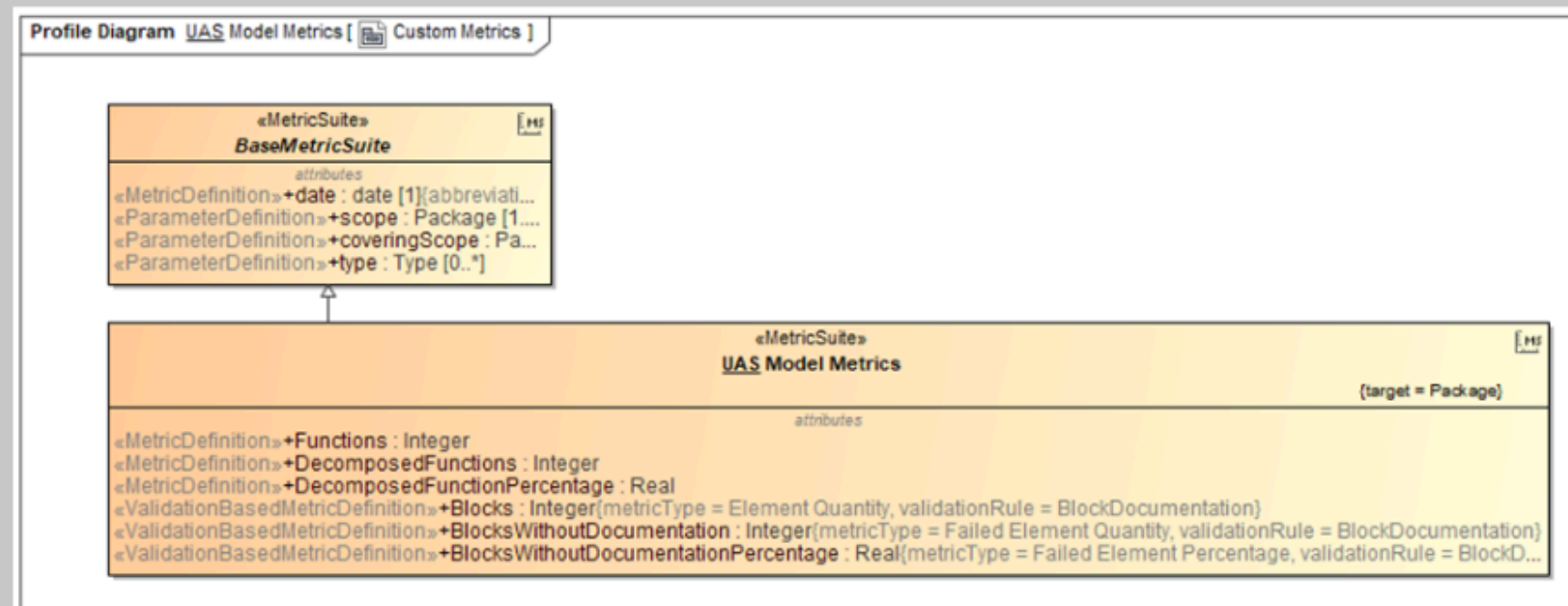


# Developing Custom METRIC SUITES

Criteria

Metric Suite: UAS Model Metrics Filter:

#	Date	Scope	Functions	Decomposed Functions	Decomposed Function Percentage	Blocks	Blocks Without Documentation	Blocks Without Documentation Percentage
1	2023.11.25 14.07	Delivery UAS Example	56	20	35.7143	138	133	96.3768



When developing custom Metric Suites, it is common to copy and paste to reuse parts of previous metric definitions to save time.

Within this module we cover:

- Profile Diagram
- General Process for Developing Metrics
- Accessing Other Metric and Parameter Definitions



# CONTACT US

[www.enola.com](http://www.enola.com)



[training@enolatech.com](mailto:training@enolatech.com)



+1 877 281 7341



[linkedin.com/company/enolatech](https://www.linkedin.com/company/enolatech)

